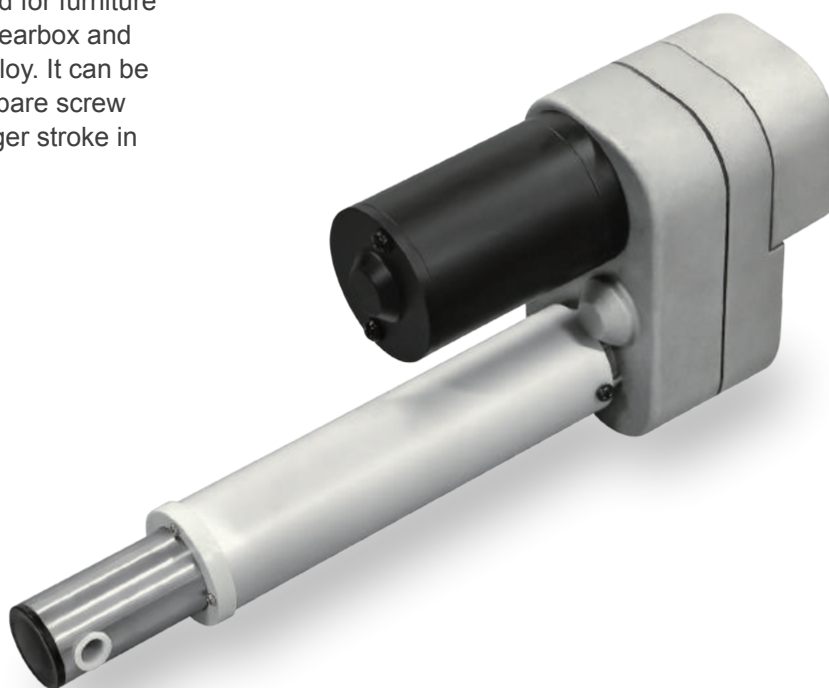


Actuator

LD60

LD60 is a robust linear actuator designed for furniture and homecare application. Both of the gearbox and rear connector are made of aluminum alloy. It can be without inner / outer tubes, and use the bare screw nut as front connector, which allows bigger stroke in confined spaces.



Feature

- Main applications: Furniture, homecare
- Input voltage: 24V DC
- Max. load: 6000N (push/pull)
- Typical speed at no load: 8.4 mm/sec
- Typical speed at full load: 4.9 mm/sec
- Stroke: 100 ~ 400 mm
- Aluminum alloy outer tube and gearbox
- Preset cam type limit switches
- Noise level: ≤ 52 dB
- Duty cycle: 10%, max. 2 min. continuous operation.
- Ambient operation temperature: $-10^{\circ}\text{C} \sim +60^{\circ}\text{C}$
- Compliant with EN 60601-1-2

Option

- Standard / fast version
- Without extension tube and outer tube
- Rear connector turns 90° in pivot orientation
- Black color outer tube and gearbox, Fig. 1

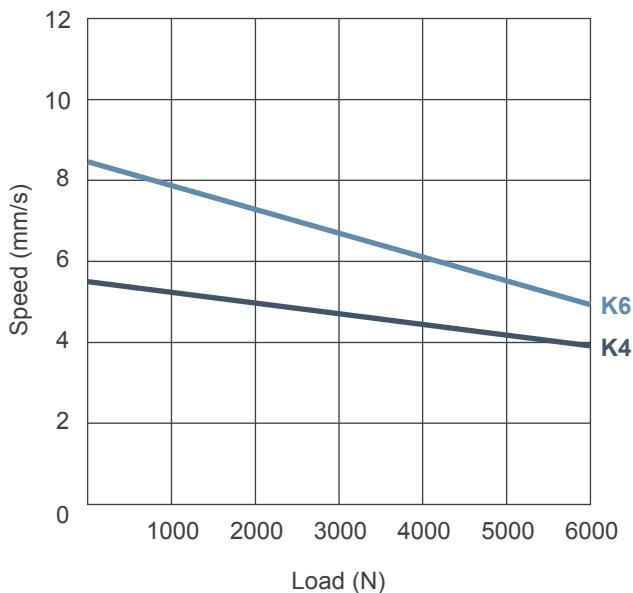


Fig. 1

Performance Data

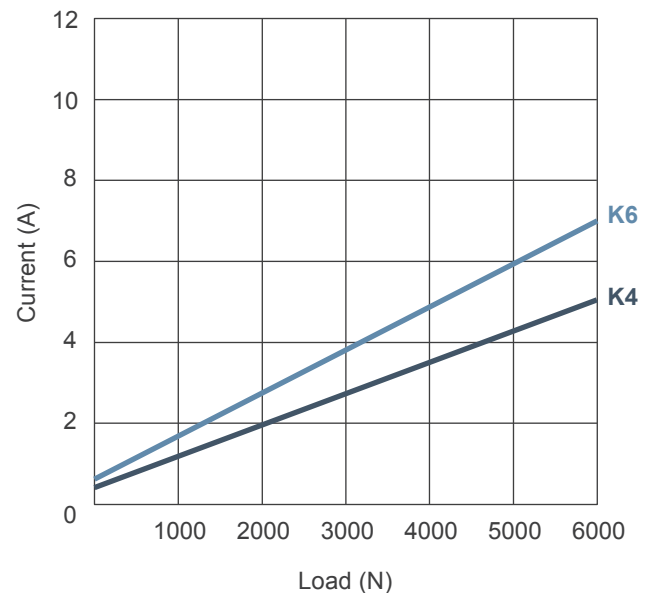
Model No.	Push Max. (N)	Pull Max. (N)	*Typical Speed (mm/s)		*Typical Current (A)	
			No Load	Full Load	No Load	Full Load
LD60-24K4-XXX.XXX-XX000X	6000	6000	5.5	3.9	0.4	5.1
LD60-24K6-XXX.XXX-XX000X	6000	6000	8.4	4.9	0.6	7.0

Speed vs. Load



Current vs. Load

24V DC

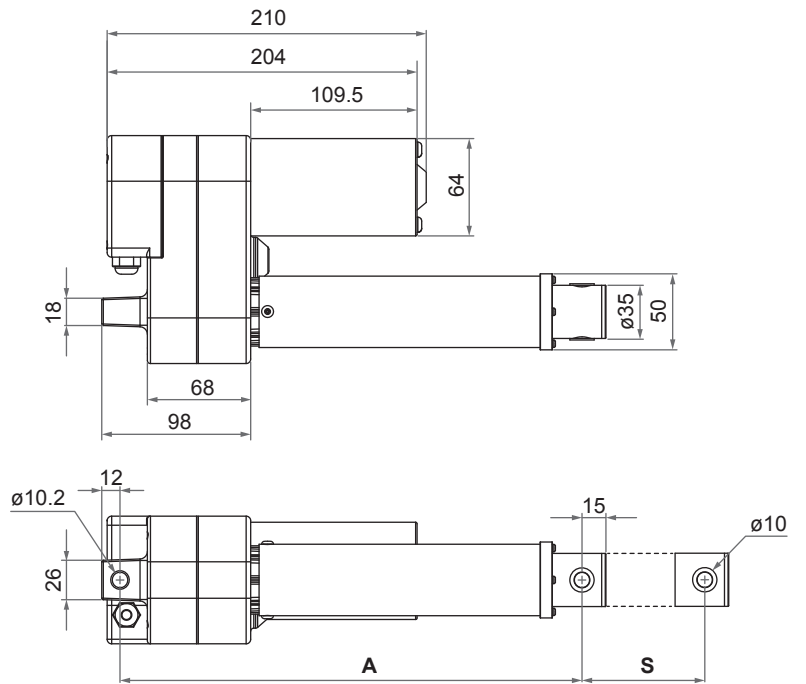
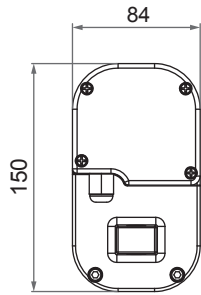
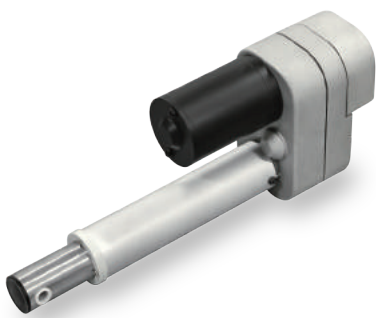


Remarks:

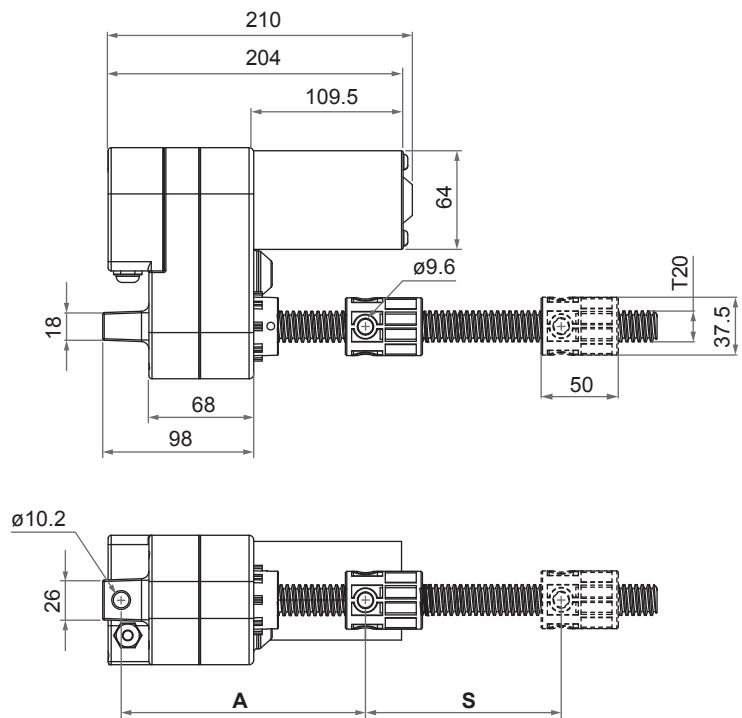
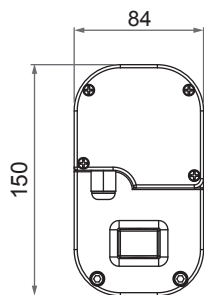
- * The typical speed or typical current means the average value neither upper limit nor lower limit. The performance curves are made with typical values.

Dimensions

Standard, with extension tube

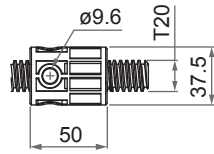


Bare screw nut

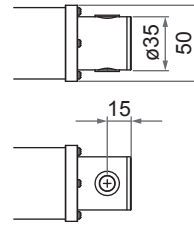


● **Front Connector**

0: Plastic nut, without extension tube and outer tube

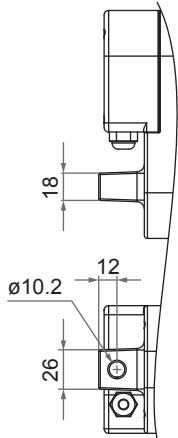


3: Drilled hole on inner tube with plastic bushing

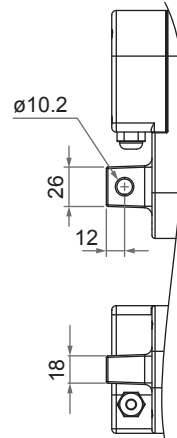


● **Rear connector**

0: Alluminum, 0°



9: Aluminum, turn 90° in pivot orientation



Installation Dimension

Installation Type	Front Connector #	Retracted Length (A)
Standard, with extension tube	3	$A \geq S + 190\text{mm} (\pm 3\text{mm})$
Bare screw nut	0	$A \geq 190\text{mm} (\pm 3\text{mm})$

Available stroke (S) range = 100 ~ 400 mm

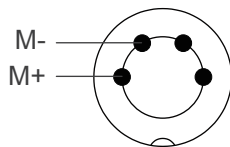
Extended length = S + A

Compatibility

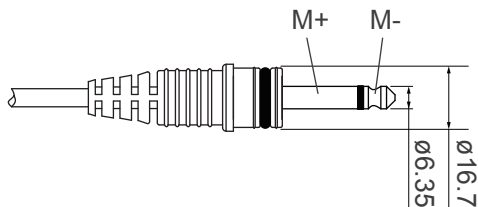
Product	Model	LD60 spec
Control box	MD6C	- Need to be chosen with K4 motor - 4-pin Moteck H-type or V-type DIN plug
	CB4P-HP	- With Moteck J2-type ø6.35 phone jack
	CB5P-M	- Need to be chosen with K4 motor - 6-pin Moteck L2-type minifit plug

Cable Plug

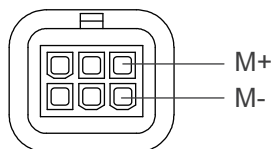
Moteck H-type or V-type DIN plug



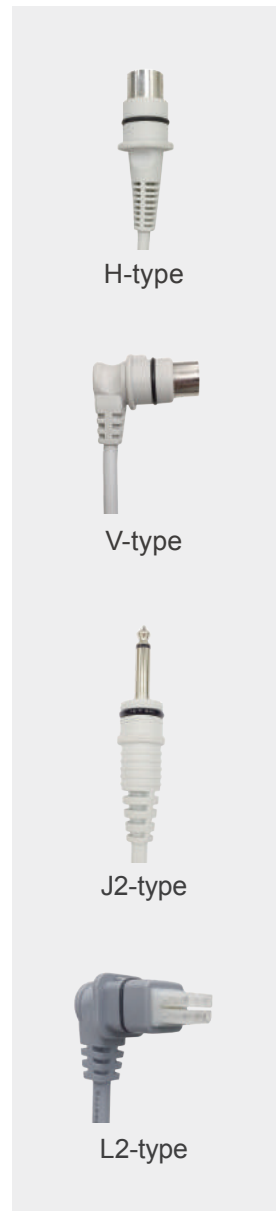
Moteck J2-type phone jack



Moteck L2-type minifit 6-pin, 90° plug



Note: Connect (M+) to '+' & (M-) to '-' of DC power, the actuator will extend.



Ordering Key

LD60 - 24 K6 - 290 - 390 - 3 0 0 0 B 0

Input voltage	24: 24V DC
Motor and Spindle type	K4: Standard version K6: Fast version (Refer to Performance Data)
Retracted length	XXX (Refer to Dimensions)
Extended length	XXX (Refer to Dimensions)
Front connector	0: Plastic nut, without extension tube and outer tube 3: Drilled hole on inner tube with plastic bushing (aluminum alloy outer tube)
Rear connector	0: Alluminum, standard 9: Alluminum, turn 90° in pivot orientation
Reserved	0: No meaning
Reserved	0: No meaning
Color	0: Aluminum surface B: Black color
Cable length	0: 300mm straight 1: 1000mm straight A: 450mm with 300mm coiled

Terms of Use

The user is responsible for application suitability of Moteck products. As ongoing improvement process continues, products listed on the Moteck website are subject to change without prior notice. Moteck reserves the right to terminate the sales or remove any product displayed on the website, or listed in its catalogues.